

Daurer Collection

Melrose Florida

2002

125th Anniversary



Pearsall Family Photo - Daurer Collection

Rowing by Melrose Bay

January 2002

SUNDAY	MONDAY	TUESDAY	WEDNESDAY	THURSDAY	FRIDAY	SATURDAY
		1 <i>New Year's Day</i>	2	3	4	5
6	7	8 <i>Melrose Business & Community Association Meeting</i>	9	10	11	12
13	14	15	16	17	18	19
20	21 <i>Martin Luther King Jr. Day</i>	22	23	24	25	26
27	28	29	30	31		

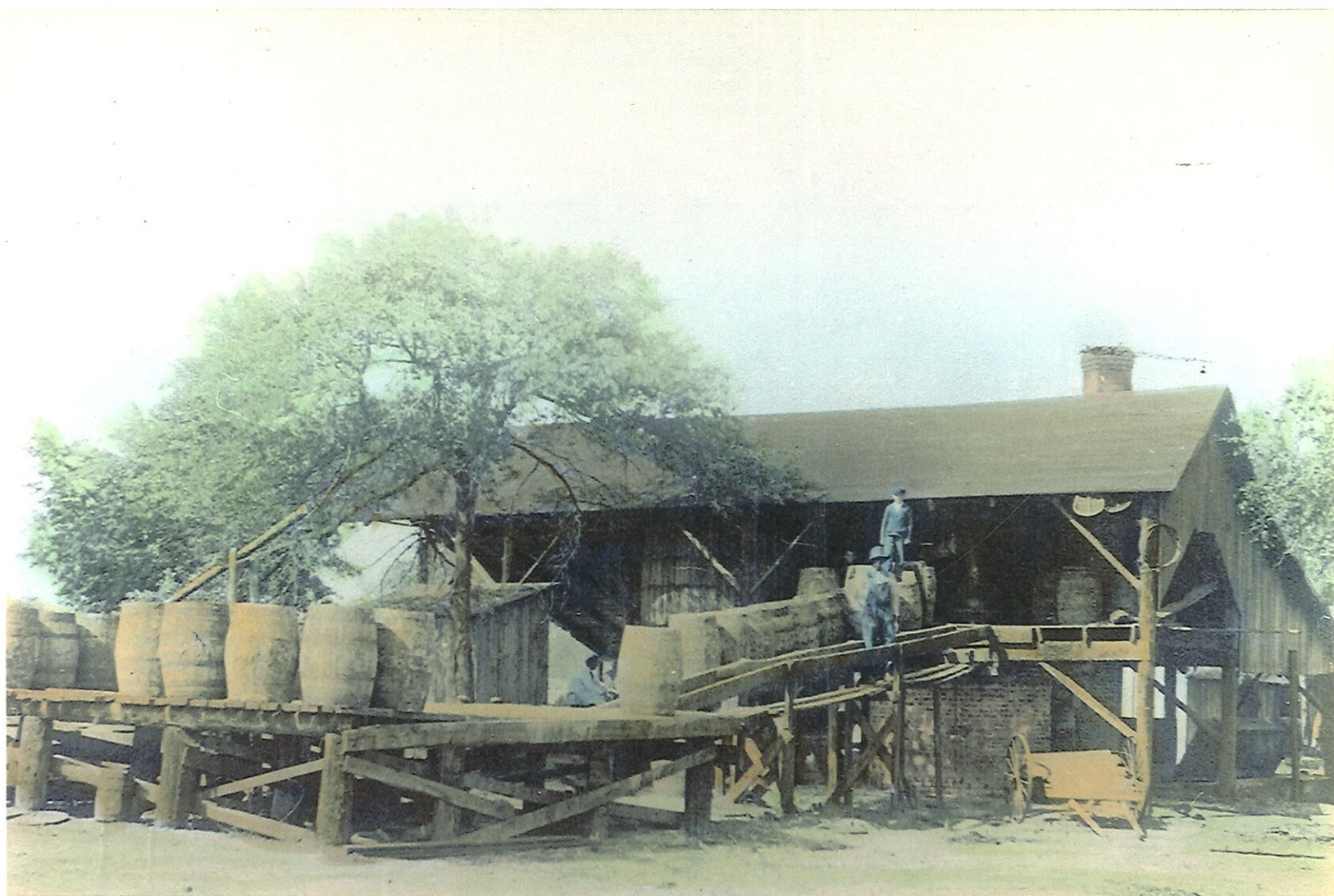


Daurer Collection

View on Quail Street circa 1890's.

February 2002

SUNDAY	MONDAY	TUESDAY	WEDNESDAY	THURSDAY	FRIDAY	SATURDAY
					1	2
3 <i>Historic Melrose Annual Meeting</i>	4	5	6	7	8	9
10	11	12	13 <i>Melrose Library Association Annual Meeting</i> <i>Melrose Business & Community Association Meeting</i>	14 <i>Valentine's Day</i>	15	16
17	18 <i>President's Day</i>	19	20	21	22	23
24	25	26	27 <i>Phi Sigma College, formerly called Hotel Santa Fe; burned 1911</i>	28	<i>Feb 29, 1884 the sternwheeler, F.S. Lewis burned in the Santa Fe Canal. Loss was \$6,000 - no insurance. Bonnie Melrose pg 113</i>	



Daurer Collection

Turpentine Still on the south shore of Lake Santa Fe 1916

March 2002

SUNDAY	MONDAY	TUESDAY	WEDNESDAY	THURSDAY	FRIDAY	SATURDAY
					1 <i>Historic Melrose Auction</i>	2
3	4	5	6	7	8	9 In 1886, Dr. Curtis planted the 1st pecan tree seedlings in the area. They came from Milton FL. Bonnie Melrose pg 176-177
10	11	12	13 <i>Melrose Business & Community Association meeting</i>	14	15	16
17 <i>St. Patrick's Day</i>	18	19	20	21	22	23
24 <i>Easter</i> 31	25	26	27	28	29	30



Daurer Collection

Fallen oak on Blanchard's Place, located on the south shore of Big Santa Fe Lake.

Elizabeth Orr hired the "Alert" to go on an excursion and picnic. Along the way, she and friends stopped off at the big tree to have their picture taken, and then continued on to the Earleton area to visit friends. Circa late 1880's.

Orr Letters in the UF History Library

April 2002

SUNDAY	MONDAY	TUESDAY	WEDNESDAY	THURSDAY	FRIDAY	SATURDAY
	1 <i>April Fool's Day</i>	2	3	4	5	6
7	8	9	10 <i>Melrose Business & Community Association Meeting</i>	11	12 <i>Bonnie Melrose 125th Anniversary Celebration</i>	13 <i>Bonnie Melrose 125th Anniversary Celebration</i>
14 <i>Bonnie Melrose 125th Anniversary Celebration</i>	15	16	17	18 <i>In 1988 Historic Melrose, Inc. (HMI), which was formed in 1985, held its first official meeting.</i>	19	20
21	22	23	24	25	26 <i>In 1881, the sternwheeler F. S. Lewis made her 1st trip through the canals to Santa Fe Lake. Bonnie Melrose p86</i>	27
28	29	30				

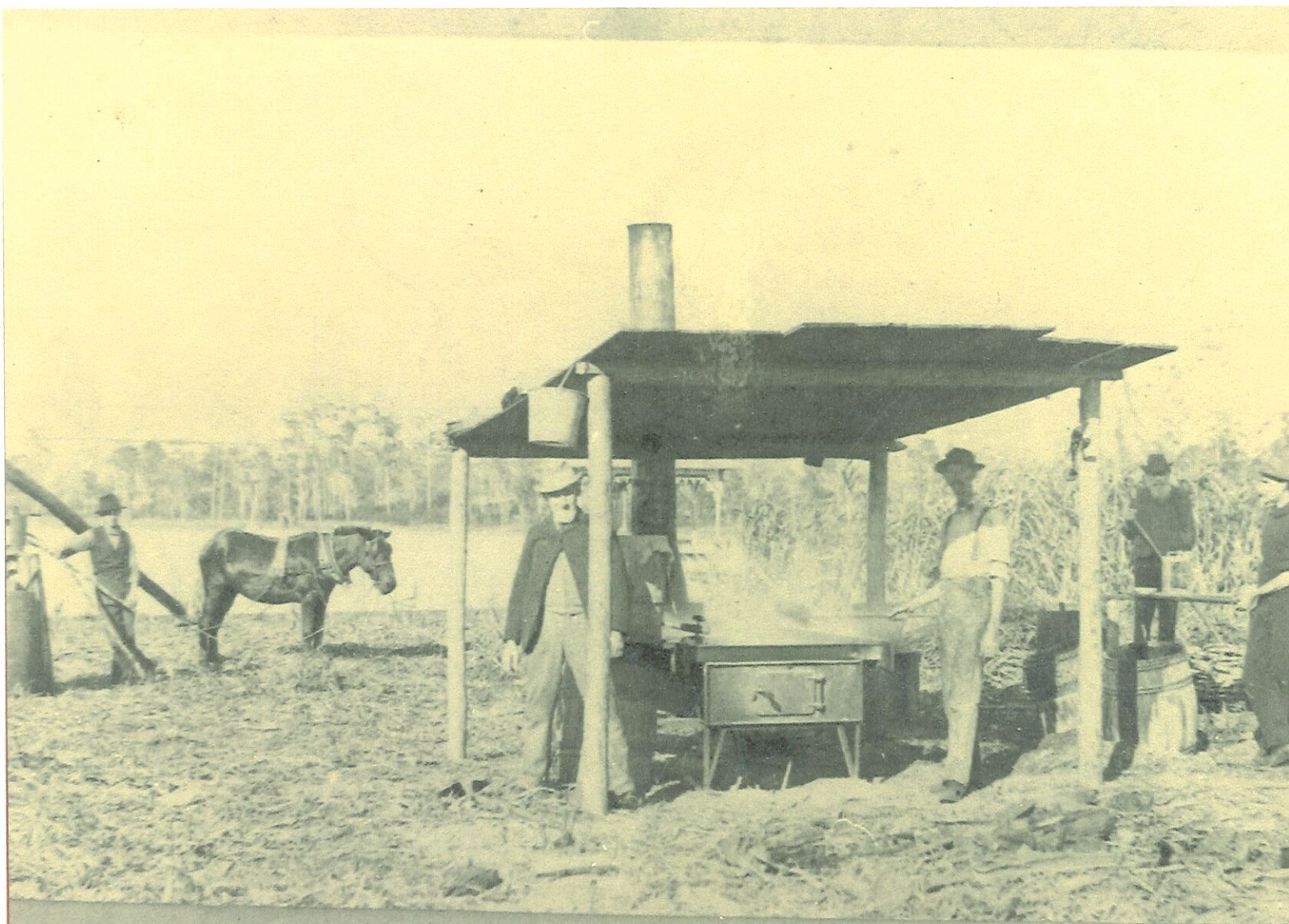


Daurer Collection

"City of Melrose" freight boat, run by E. M. Robinson, and loading car at Waldo. E.M. Robinson is standing left with hat; Riddling boys are in front, and Cleve Robinson is standing on the right. Circa 1920

May 2002

SUNDAY	MONDAY	TUESDAY	WEDNESDAY	THURSDAY	FRIDAY	SATURDAY
			1	2	3	4
5	6	7	8 <i>Melrose Business & Community Association Meeting</i>	9	10 <i>In 1877, town plat was recorded in Alachua County Courthouse. Historic Melrose 1989 Brochure</i>	11
12 <i>Mother's Day</i>	13	14 <i>In 1977, Melrose celebrated its centennial. Bonnie Melrose pg55</i>	15	16	17	18
19	20	21	22 <i>Last day of classes Melrose Elementary School</i>	23	24	25
26	27 <i>Memorial Day</i>	28	29	30	31	



Daurer Collection

Cooking sugar cane - Hamlyn property, Melrose Bay 1896

June 2002

SUNDAY	MONDAY	TUESDAY	WEDNESDAY	THURSDAY	FRIDAY	SATURDAY
						1
2	3 <i>In 1878 M.C. Goodson began serving as Melrose's first Postmaster. Bonnie Melrose pg 110</i>	4	5	6	7	8
9	10	11	12 <i>Melrose Business & Community Association Meeting</i>	13	14 <i>Flag Day</i>	15
16 <i>Father's Day</i>	17	18	19	20	21	22
23 <div></div>	24	25	26	27	28	29
<div></div> 30						



Daurer Collection

Cooking fish

Col. Fremont Tolles left, Mr. Dunbar right



Daurer Collection

Mrs. Shooter shot this gator

*Shooters Landing on the Santa Fe Canal
circa early 1900's*

July 2002

SUNDAY	MONDAY	TUESDAY	WEDNESDAY	THURSDAY	FRIDAY	SATURDAY
	1	2	3	4 <i>Independence Day</i>	5	6
7	8	9	10 <i>Melrose Business & Community Association Meeting</i>	11	12	13
14	15	16	17	18	19	20
21	22	23	24	25	26	27
28	29	30	31			



Daurer Collection

Melrose Town Square on the NE corner of Bellamy Road and Hampton, in the early 1900's.

The Vogelbach Drugstore, center back left, now used for the Homemakers Club, was the only drugstore in Melrose for sixty years.

August 2002

SUNDAY	MONDAY	TUESDAY	WEDNESDAY	THURSDAY	FRIDAY	SATURDAY
				1	2	3
4	5	6	7	8	9	10
11	12 <i>First day of classes Melrose Elementary School</i>	13	14 <i>Melrose Business & Community Association Meeting</i>	15	16	17
18	19	20	21	22	23	24
25	26	27	28	29	30	31



Daurer Collection

Harry Jackson built and operated this train that ran to Orange Heights.

A real "jack - of-all-trades" he also owned and operated a power company, a water company, a freight boat, a garage, was a blacksmith and a casket maker.

Circa late teens

September 2002

SUNDAY	MONDAY	TUESDAY	WEDNESDAY	THURSDAY	FRIDAY	SATURDAY
1	2 <i>Labor Day</i>	3	4 <i>In 1886, three shock waves were felt in Melrose from Savannah GA earthquake between 10pm Sept 4 & 2am Sept 5 Bonnie Melrose pg 180</i>	5	6	7
8	9	10	11 <i>Melrose Business & Community Association Meeting</i>	12	13	14
15	16	17	18	19	20	21
22	23	24	25	26	27	28
29	30					



Daurer Collection



Daurer Collection

"Melrose became a winter resort in 1879 when the West India Transit Co. began digging a canal from its station at Waldo east to Lake Alto. Another canal was dug to connect Alto with Little Santa Fe Lake, and this allowed boats to pass through these lakes and Big Santa Fe toward Melrose Bay where orange groves existed."

Florida Times Union 12-11-1955

The "Alert", was the second steamboat used between Melrose and Waldo, a distance of thirteen miles. It began operating in the area after its predecessor, the "F. S. Lewis" burned in February 1884. Circa 1885

October 2002

SUNDAY	MONDAY	TUESDAY	WEDNESDAY	THURSDAY	FRIDAY	SATURDAY
		1	2	3	4	5
6	7	8	9 <i>Melrose Business & Community Association Meeting</i>	10	11	12
13	14	15	16	17	18	19
20	21	22	23	24	25	26
27	28	29	30	31 <i>Halloween</i>		

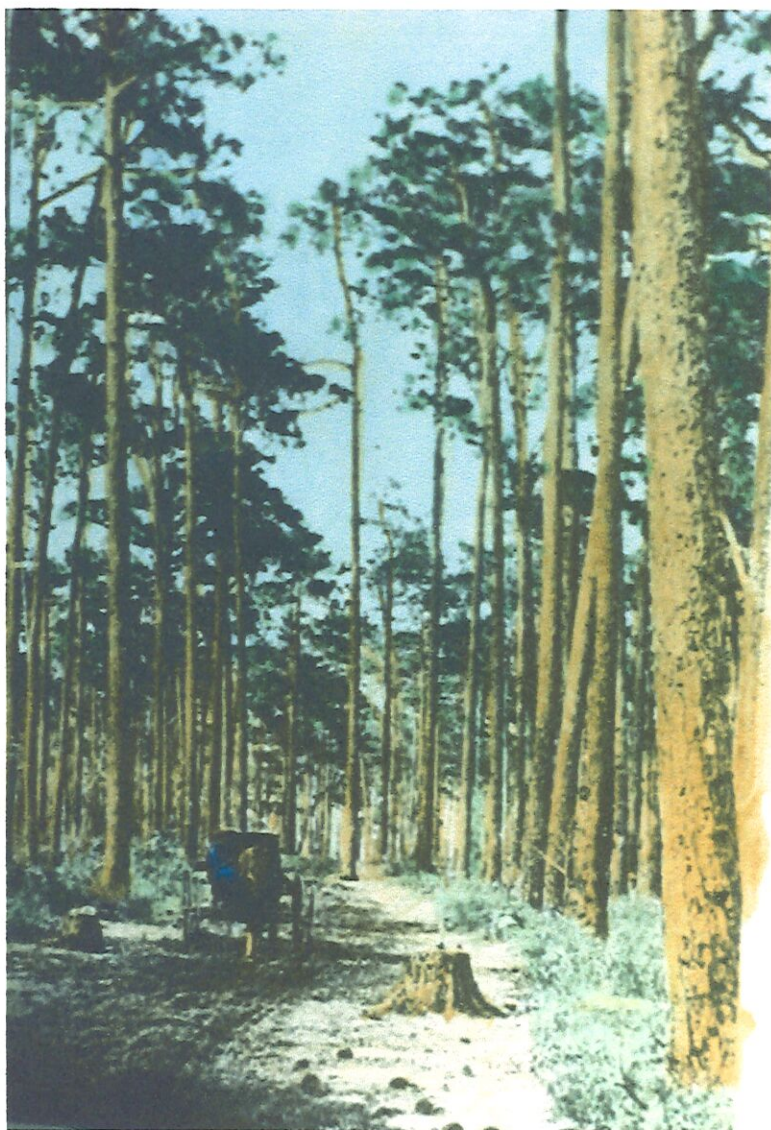


Daurer Collection

The Grist Mill was located on Etoniah Creek at Banana, about a mile south of Melrose. Dr. McRae operated it after the Civil War.

November 2002

SUNDAY	MONDAY	TUESDAY	WEDNESDAY	THURSDAY	FRIDAY	SATURDAY
					1	2
3	4	5 <i>Election Day</i>	6	7	8	9
10 <i>Melrose Woman's Club granted a charter in 1893. Club building was built in 1893 for \$489.00</i>	11 <i>Veteran's Day</i>	12	13	14	15	16
17	18	19	20	21	22	23
24	25	26	27	28 <i>Thanksgiving</i>	29	30 <i>Chanukah Begins</i>



Daurer Collection

Road to Palatka circa 1890's



Daurer Collection

Road to Palatka 1917



December 2002

SUNDAY	MONDAY	TUESDAY	WEDNESDAY	THURSDAY	FRIDAY	SATURDAY
1	2	3	4	5	6	7
8	9	10	11	12	13	14
						<i>Christmas Parade</i>
15	16	17	18	19	20	21
		<i>Historic Melrose, Inc. (HMI) was formed in 1985.</i>				
22	23	24	25	26	27	28
			<i>Christmas</i>			
29	30	31				

Melrose Florida

2002

Anniversary Calendar

Historic Melrose, Inc., a non-profit volunteer organization created in the 1980's, has been instrumental in raising the awareness and appreciation of the area's past. Their members, with the help of the community, have identified and researched historically significant structures, published an Architectural and Historical survey, produced an oral history videotape "The Magic of Melrose", helped prepare a Melrose historic tour guide, produced historical displays and donated them to the Melrose Library. They maintain the Melrose Museum of Photographic History, and conduct tours of local historic sites. In 1990, after receiving a grant to help prepare the proposal, the Melrose Historic District, including some 72 sites, was placed on the National Register of Historic Places. Recently HMI has signed a contract to purchase property on Old Bellamy Road in the Historic District to be used as a Heritage Park.

Contributions to the park project may be sent to:

Historic Melrose, Inc.

P.O. Box 704

Melrose FL 32666

Make checks payable to: Friends of Melrose



*Cover: The "Alert" on
Melrose Bay*

Photographs

Reproduced by Joe Daurer

Hand painted by Rosemary Daurer

Compiled by Holly Prugh for HMI, 2001

References

Tolles, Zonira Hunter, Bonnie Melrose, Keystone Heights FL, 1982

Historic Melrose, Inc. brochure

Alachua County Florida Historical Tour Series: Melrose and Waldo, 1992

Rosemary Daurer